

# AUTOZYME™ ENA

## Anti-Jo-1 Well Pack

- **Simple and adaptable methodology**
- **Consistent interpretation of results**
- **Flexible - build your own profile with other AUTOZYME™ ENA products**
- **Uniform - identical incubations**
- **Detects antibodies to 50 kDa proteins**

### ● **Indication**

AUTOZYME™ ENA Anti-Jo-1 antibodies well pack is a sandwich immunoassay for the detection of antibodies to Jo-1 antigen in human serum or plasma.

### ● **Summary and explanation of test**

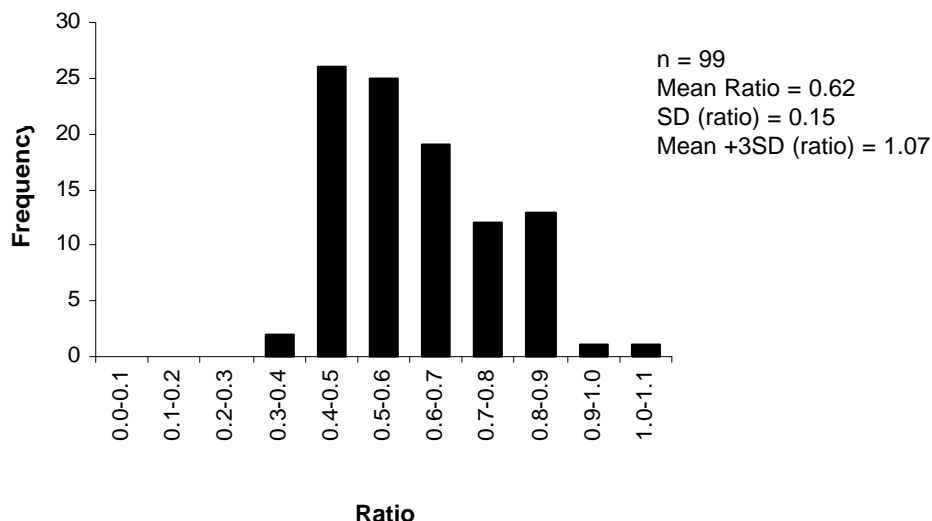
The AUTOZYME™ ENA method employs a unique antigen-coated microwell technology, which is ideal for the batch-screening of large numbers of samples for a range of auto-antibodies. The method utilises a non-competitive sandwich enzyme immunoassay system and is identical for all six antigens:

Ro (SS-A), La (SS-B), Sm, Sm/RNP, Jo-1 and Scl-70.

Anti-Jo-1 antibodies appear as a clinical indication in 25-30% of patients with polymyositis and is considered to be disease specific.

This product must be used in conjunction with the AUTOZYME™ ENA bulk pack (Catalogue No: Z1000).

### ● **Reference ranges**



# AUTOZYME™ ENA Anti-Jo-1 Well Pack

Catalogue No. Z1500

## Precision

Intra-assay precision (n=8)		Inter-assay precision (n=3)	
Mean	CV (%)	Mean	CV (%)
0.98	8.0	1.09	7.4

## Correlation with commercial ELISA

n = 78		AUTOZYME™	
		+	-
EIA	+	4	1
	-	6	67

Overall agreement = 91%

## Interfering analytes

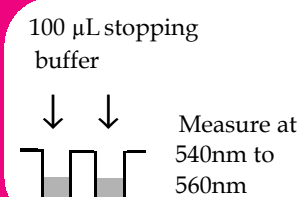
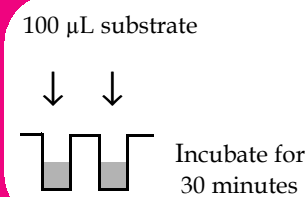
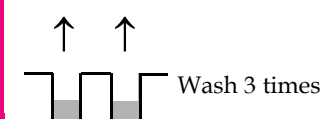
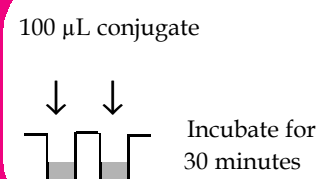
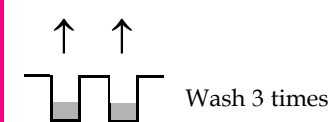
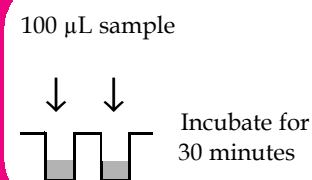
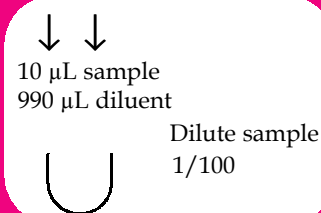
No significant interference outside of the usual precision of the assay was detected with the following potential interferents:

Bilirubin	0.5 g/L
Haemoglobin	5.0 g/L
Ascorbic acid	1.0 g/L
Lipids	5 % (v/v)
human IgG <sub>1</sub> κ myeloma serum	16 mg/mL
human IgM λ myeloma serum	4 mg/mL

## Product Range

Code	Product	Test Size
Z1000	Bulk Pack	192
Z1100	Anti-Ro antibodies	32
Z1200	Anti-La antibodies	32
Z1300	Anti-Sm antibodies	32
Z1400	Anti-Sm/RNP antibodies	32
Z1500	Anti-Jo-1 antibodies	32
Z1600	Anti-Scl-70 antibodies	32

## Test Procedure



Cambridge Life Sciences Ltd.  
14 St. Thomas' Place, Cambridgeshire Business Park, Ely, Cambs CB7 4EX UK  
Tel: 01353 645200 Fax: 01353 645250  
email: sales@clsdiagnostics.com  
www.cambridgelifesciences.co.uk